



SEND

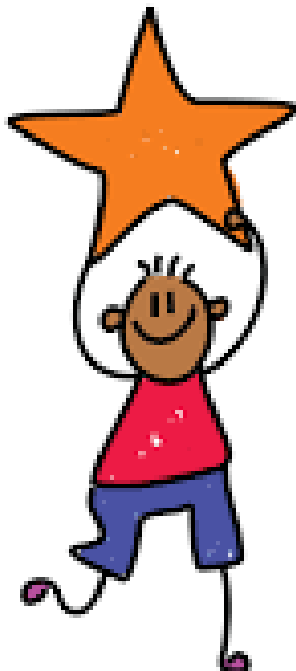
School Closure Information

SEND during the School Closure

SEND
provision
at home



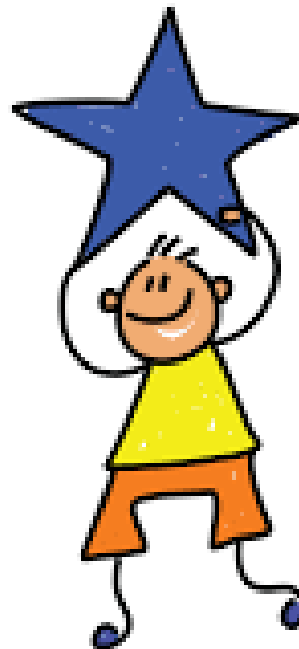
Online
Resources



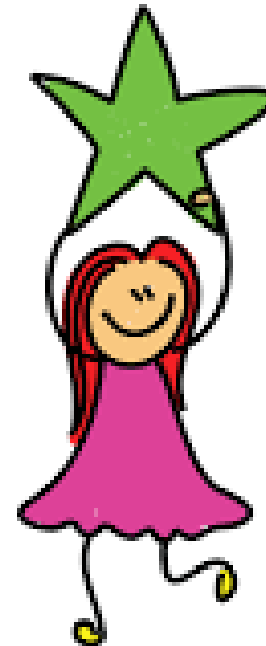
I'm
worried
about my
child



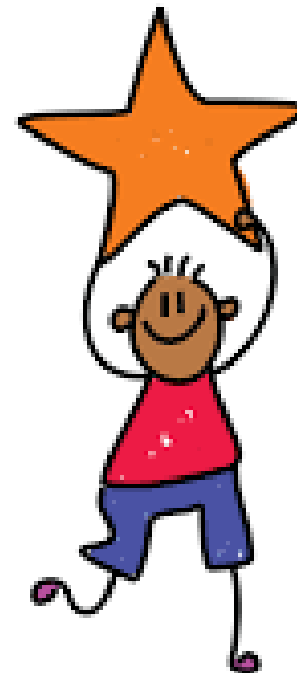
Outside
agency
support



The Local
Offer



Acronyms
– What do
they
mean?



Contact
us





SEND provision at home



Help!

We are still here to support you whilst school is closed. This is an uncertain time for everyone and we want to help make it as stress-free as possible. If your child is struggling with the work that has been set, please contact their class teacher through the email address provided or call the school office.

What can we do to help?

- Suggest different ways to attempt the work through email
- Set different activities – similar to normal classroom practice
- Signpost you to online resources that may help
- Offer/suggest resources to help



ELSA/Pastoral support

All pupils supported by our ELSAs have the option of receiving remote pastoral support if required.

If you have concerns about your child's emotional wellbeing please speak to your class teacher in the first instance.



Online resources



Speechlink Parent Portal is a website recommended by the DfE which is full of advice and support from Speech and language therapists.

<https://speechandlanguage.info/parents>



The BBC Bitesize website has short video clips and online activities that are user friendly and linked to all subjects of learning. Click on the link below:

<https://www.bbc.co.uk/bitesize/primary>



Twinkl have created a home learning pack aimed at children with SEND. Click on the link below to go directly to the page. You will need to set up a free account.

<https://www.twinkl.co.uk/resource/send-school-closure-home-learning-resource-pack-t-s-2548769>



Chatter Pack is a voluntary-run, special educational needs and disabilities hub with plenty of free resources and advice.

<https://chatterpack.net/>



I'm worried about my child



This is an unusual time. If you are worried about your child's learning please speak to their class teacher – we are all still here to help.

If you are worried about any appointments that you have coming up with Speech and Language, Community paediatrics etc. please contact Mrs York.
sam.york@uptonmeadows.org

If you are worried about your child's behaviours, eating, sleep or anxieties linked to their SEND please contact the Specialist Support Service for SEND.

https://www.northamptonshire.gov.uk/councilservices/children-families-education/SEND/specialist-support-for-send/Pages/SEND_support_service.aspx



If you have a safeguarding concern please contact either Mrs Searing, Mrs Letts or Mrs Johnson.

Clare.searing@uptonmeadows.org
Michelle.letts@uptonmeadows.org
Sue.Johnson@uptonmeadows.org

Or alternatively contact MASH on:

0300 126 1000 (Option 1).



Outside Agencies



Children First
Northamptonshire



The SEND Support Service is available for telephone consultations while school is closed.

Follow the link to their website.

https://www.northamptonshire.gov.uk/councilservices/children-families-education/SEND/specialist-support-for-send/Pages/SEND_support_service.aspx



Help children with SEND continue their education during coronavirus (COVID-19)

Follow the link below to access advice from the government about what is available for children with SEND during the school closure.

<https://www.gov.uk/guidance/help-children-with-send-continue-their-education-during-coronavirus-covid-19>



NPFG

Northants Parent Forum Group

The Northants Parent Forum Group (NPFG) is an independent parent-led group formed and run by volunteers. They have information about special education needs and /or disabilities (SEND) in Northamptonshire. Click on the image above or the link below to access their website.

<https://www.npfg.co.uk/>



facebook



The Local Offer
Northamptonshire
@LONorthants

Northampton's Local Offer lists various services for SEND. Click on the link below or visit their Facebook page. They are regularly posting information on Facebook.

<https://www.northamptonshire.gov.uk/councilservices/children-families-education/send/local-offer/Pages/default.aspx>

[**Home**](#)



Local Offer

The Local Offer

Every local authority is required to publish a local offer which brings together information about education, health and care services for children and young people from 0 to 25 with special educational needs and disabilities. To access Northampton's Local offer please click the link below. Just be aware that some services are operating slightly differently due to school closures.

<http://www3.northamptonshire.gov.uk/councilservices/children-families-education/SEND/local-offer>



Acronyms – What do they mean?



ADHD

Attention Deficit
Hyperactivity
Disorder

EHCP

Education
Health and
Care Plan

ASD

Autism
Spectrum
Disorder

CAMHS

Child & Adolescent
Mental Health
Service

SALT

Speech &
Language
Therapy

EHA

Early Help
Assessment

IEP

Individual
Education Plan

EP

Educational
Psychologist

IASS

Information &
Advice Service

OT

Occupational
Therapy

SEND

Special
Educational Needs
& Disabilities

SENCo

Special
Educational Needs
Coordinator



Contact us



01604 683850 or 07510 124571



sam.york@uptonmeadows.org